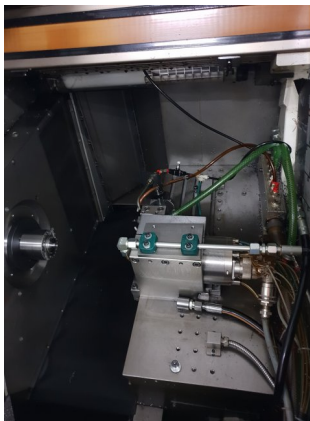


KUMMER K200L-A D

Kind : CNC lathe
Brand : KUMMER
Model : K200L-A D
Year : 1999
Serial Nr: A2242
Stock Nr : T12395



TECHNICAL DETAILS

- Number of spindles : 1
- Number of axes : 2
- MAIN SPINDLE
 - Spindle power : 6.1 [kW]
 - Max. turning diameter : 500 [mm]
- TABLE
 - X/Z stroke : 210/210 [mm]
- POWER SUPPLY
 - Supply voltage : 380 [V]
- WEIGHT & DIMENSIONS
 - Machine floor space : 4050x3720 [mm]
 - Machine weight : 3100 [kg]

EQUIPMENT

- CNC : Siemens 840C
- Coolant tank
- Electro-spindle : 120000 [rpm]